

Our Regular Newsletter

#002 | 12th February 2026

Issue 2 of **In the Loop** is here!

In this quarterly newsletter, you'll find all kinds of updates from the Discovering Liveability project, along with exciting work from our growing network of researchers, practitioners, lived experience experts, and other collaborators.

Publications

'The Cruel Optimism of Suicide Prevention: thinking beyond the mental health model'

This paper emerged from the Suicide In/As Politics (SIAP) and was written by Discovering Liveability team members Hazel Marzetti, Amy Chandler, Alex Oaten and Ana Jordan. Funded by the Leverhulme Trust, the SIAP project used qualitative methods to investigate how suicide is constructed and responded to in UK politics, and how members of diverse publics respond to the political uses of and responses to suicide.

Blog posts

Site Visit 2: Australia

Co-Investigator Hazel Marzetti reflected on her visit to Australia in November last year. This was the second trip in a series of site visits being undertaken across the Discovering Liveability project, beginning with Dr Sarah Huque's trip to Canada last summer.

Ligature Points, Risk Assessment, and Questionable Justification in the English Suicide Prevention Policy

Research Fellow Tom Wadsworth's blog post explores some of the policy analysis work that is currently happening on Work Package 4.

Early impact: Scottish Suicide Prevention Action Plan (2026–29)

In late January, the Scottish Government and COSLA published the **Creating Hope Together, national Suicide Prevention Action Plan** for 2026–29. Our Principal Investigator, Amy Chandler and Senior Research Fellow and WPI Lead, Lynne Gilmour, commented on the plan as members of the academic advisory group and we are pleased to see that Discovering Liveability has been cited in calls to address the inequalities of suicide, looking at the conditions that can make people's lives more 'liveable'. We look forward to continuing to inform the implementation of this plan and contributing to a shift in policy discourse about suicide prevention through the lens of 'liveability' and 'liveable' lives

Events

25th March:

Save the date - Coffee and Connect: Risk and Safeguarding:

If you missed our last hub event, we are already planning our next one! This will be another online Coffee and Connect event focused on Safeguarding and Risk in suicide research. This is a topic that has resurfaced repeatedly during our hub conversations, and this event will provide an informal space to start some conversations and share existing knowledge with each other. Save the date 25th March and watch this space for more details very soon!



23rd February:

Our Principal Investigator Dr Amy Chandler will be doing a public talk and interview in Korea as part of survivor/user/activist events led by [Jeannie Park/Rabbits in Submarines for Eating Disorder Awareness Month](#). This talk will be happening online and you can find the English translation of the event listing below:

- Self-Harm, Suicide, and Stigma - Amy Chandler
- Monday, February 23rd , 7:00 PM - 9:00 PM
- Venue: Zoom
- Is self-harm a sign of help-seeking? Or is it a foolish act of attention-seeking? Did all those who attempted suicide suffer from depression? Are our country's suicide prevention policies, which emphasize open communication and a kind word, really effective? Are national budgets spent on activities like suicide prevention supporters truly a waste of time? Why might eliminating stigma have unintended consequences? What role does stigma play in obesity, eating disorders, and pro-ana?
- Related blog/interview [here](#).



24th February:

The final event in former Discovering Liveability team member Emily Yue's seminar series: Reclaiming Evidence: A Sociological Approach to Suicide Among Black Women in US with Dr. Kamesha Spates. Kamesha is an Associate Professor of Africana Studies at the University of Pittsburgh and is also a member of the Discovering Liveability Research Advisory Board. Booking link [here](#).

Events continued

29th – 30th June:

The Suicide Cultures project, which shares team members with the Discovering Liveability project, will be hosting a two-day **Critical Suicide Studies workshop** at the University of Edinburgh on 29th – 30th June. This event will bring together non-academic, established and early-career scholars working on suicide who draw on ‘critical’ approaches to think through the role of society, culture, and politics in shaping suicide itself, as well as our responses to it. The workshop will be free to attend but places are limited.

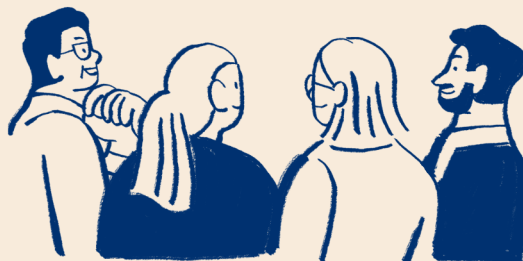
August 2026:

Our Principal Investigator Amy Chandler will also be doing a keynote at the **European Symposium on Suicide and Suicidal Behaviour (ESSSB21)** in August this year. Other keynote speakers include one of our advisory group members, Dr Ian Marsh, and Dainius Pūras, who inspired some of the Discovering Liveability team members in their explorations of liveability.

Team updates

One of our previous Discovering Liveability team members, **Dr Emily Yue**, has recently joined Healing Justice London as a Work-Related Suicide and Social Justice Researcher. You can find out more about Emily’s role [here](#), and more about Healing Justice London [here](#).

We’re really pleased to announce that **Georgie Akehurst** will be remaining on the Discovering Liveability project as a Research Fellow! In particular, Georgie will be working on the institutional ethnography for Work Package 1 of the project.



Job opportunities

We will be advertising for Research Assistant and Research Fellow roles in the next couple of months. Keep an eye on our [Get Involved](#) page and future newsletters to hear more about these opportunities!

Website

We're very excited to be launching our new Discovering Liveability website in March! This website will serve as a landing page for the project where you can find out more about the research we are conducting. Whilst our blog page will continue to be regularly updated with posts from our team members, the website will become our main hub.



**Keep an eye out for the
Discovering Liveability
website launching soon!**

Collaborator updates

Do you have some news, an event or project that might be of interest to our growing network? Email us discoveringleveability@ed.ac.uk and we will share it in our next quarterly newsletter (our next newsletter will be scheduled for around May 2026).

Thank you for reading!



If you would like to sign up to receive future newsletters, head to our blog site and enter your details into the subscription box:

<https://blogs.ed.ac.uk/discovering-liveability/>

Next issue: May 2026